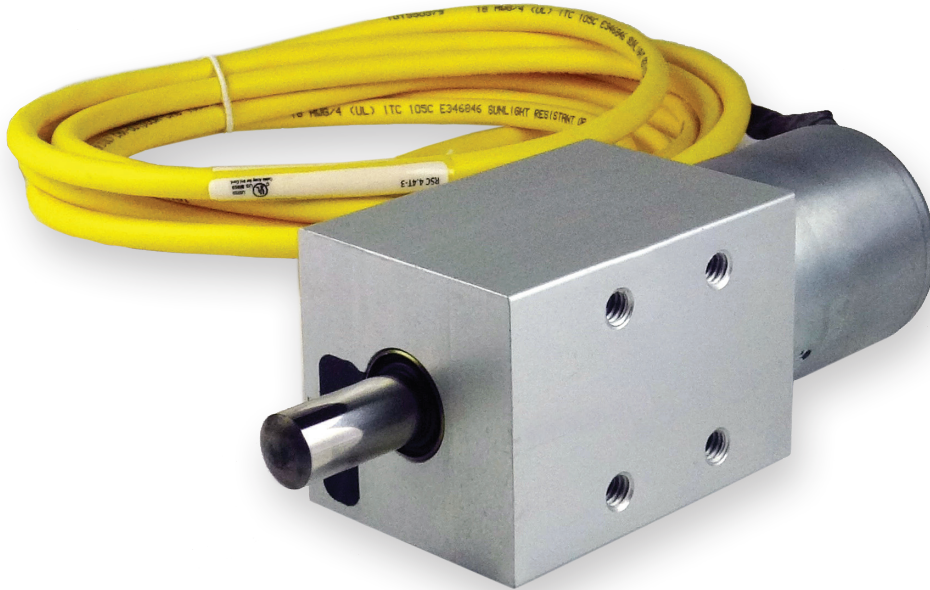


# Long-Stroke Shot Bolt Solenoid



The long-stroke shot bolt solenoid developed by TLX Technologies is suitable for a wide variety of locking and safety applications. With a typical stroke of one inch and side load capabilities up to 1000 pounds, this base shot bolt model allows for modifications to meet your application requirements. Modifications include various coil voltages, mounting and plunger variations, energizing to lock or unlock, and more.

## Features & Benefits

- Long stroke and high forces
- Bolt position sensing
- High side-load capability
- Various voltages & power levels
- Optional bolt end types
- Stainless steel bolt
- Spring return
- Mounting variations

## Typical Applications

- Access control
- Machine safety
- Personal safety
- Locking
- Latching

## Typical Specifications

- **Stroke: 1 inch**
- **Side Load: 1,000 lbs. max**
- **Duty Cycle: Intermittent duty**
- **Operating Voltage: 24 Vdc**



+1.262.970.8660 | [sales@tlxtech.com](mailto:sales@tlxtech.com) | [www.tlxtech.com](http://www.tlxtech.com)