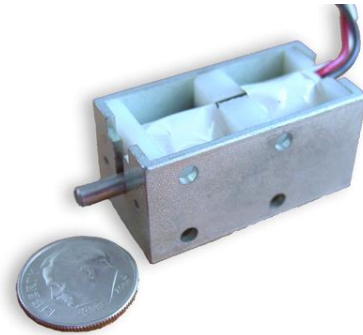


Bi-Directional Latching Solenoid

Description:

This example of latching technology was designed for use in business equipment or consumer products requiring a lock, latch or tamper proof security device. Strokes, force, voltage and package size are flexible depending upon customer requirements.

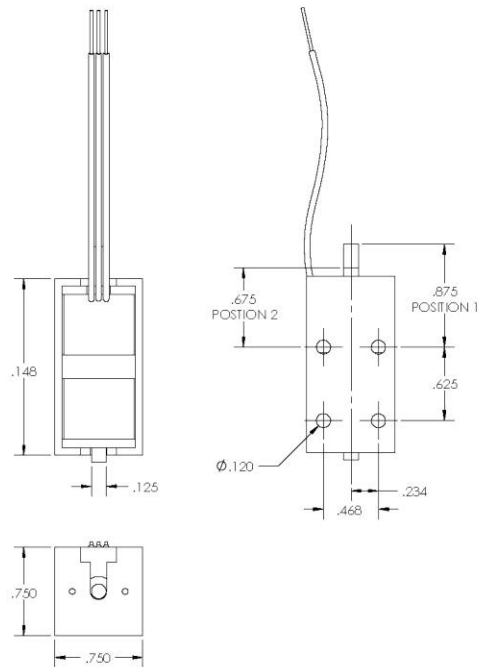


Features:

- Compact design
- Low cost
- Can be designed for specific load shifting capability
- Can be designed to configure with customer power requirements

Possible Applications:

- Electric locks
- Business equipment
- Computer case lock
- Computer docking station lock
- Business machines
- ATM machines
- Battery operated locks



Example Specifications:

English (metric as applies)

Stroke (can be designed to specification)	0.20 in (5.1 mm)
Holding Force	1.25 lbs (5.6 N)
Supply Voltage	12 or 24 Vdc
Operating Temperature Range	-40 to 140°F (-40 to 60°C)
Coil Resistance at 20°C	12 Ω
Durability	>100M cycles
Duty Rating (%ED)	100 % ED
Side Load	>100 lbs (220 N)